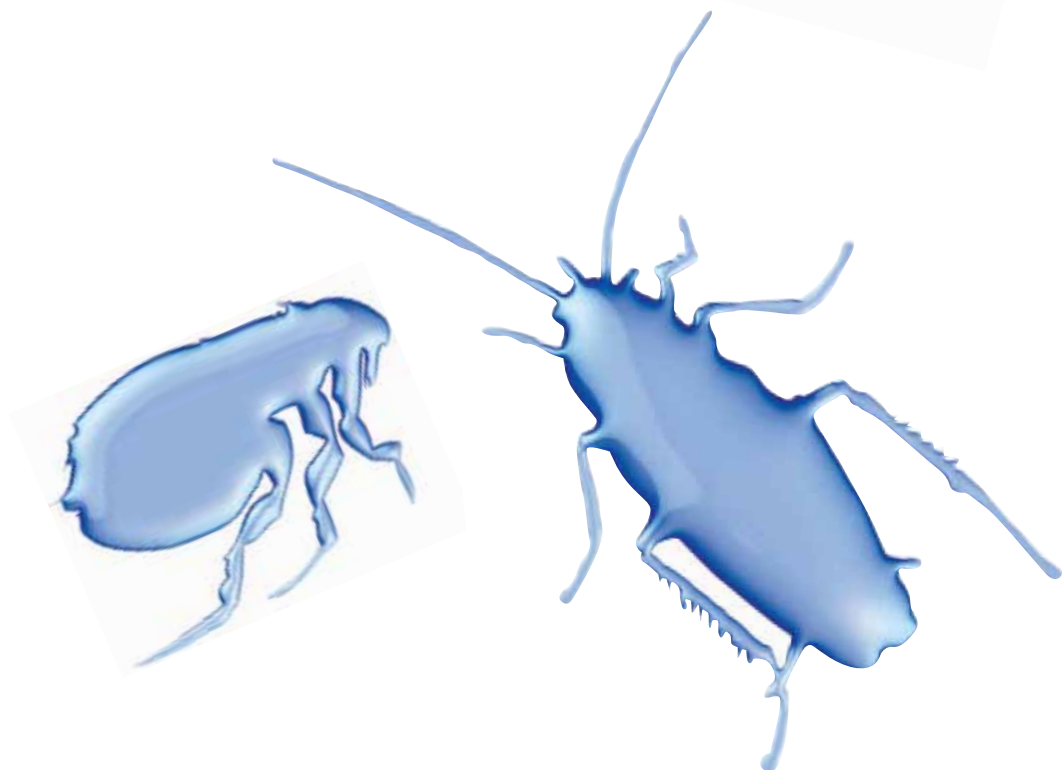


Tenopa®

The complete spray treatment.
A dual action formulation for
control of all insect life stages.



BASF Pest Control Solutions

- The ultimate insect pest solution
- Excellent broad spectrum control for all life stages
- Rapid knockdown and extended residual action
- Easy, acceptable and safe in use

Enabling the most effective solutions to your pest problems

 **BASF**

The Chemical Company

Tenopa®

Tenopa® SC is the ultimate solution to the most problematic insect pests, providing complete and reliable control of even resistant strains.

Tenopa® SC is active against all growth stages of crawling and flying insect pests for the most effective long-term control

Tenopa® SC stands out from other sprays for its unique combination of fast-acting insecticide and highly effective insect growth regulator.

Tenopa® SC is quick and easy to dilute and apply with an environmental profile that makes it especially suitable for insect control in sensitive locations.

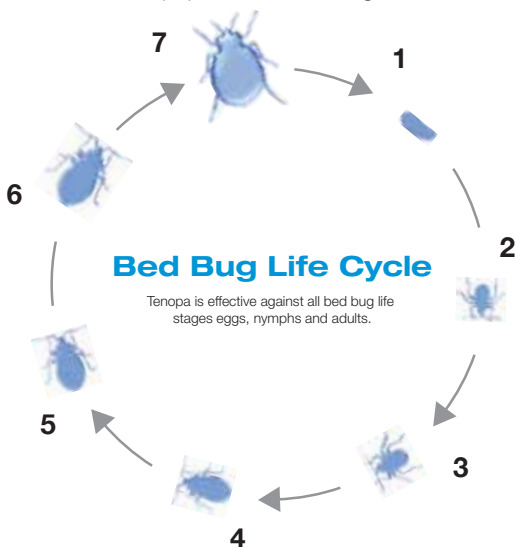
The Ultimate Insect Pest Solution

Tenopa® SC combines 30g/l of the fast-acting broad spectrum insecticide, alpha-cypermethrin with 30g/l the advanced insect growth regulator, flufenoxuron for the most complete and reliable insect control possible.

As well as its immediate pyrethroid effect on the adult insect nervous system, the flufenoxuron renders a high proportion of eggs from any survivors non-viable and lethally interrupts larval development – working far more effectively than traditional growth regulators.

This superior double mode of action ensures complete and reliable activity against even the least readily-controllable insect populations, including those exhibiting any degree of insecticide resistance.

1. Egg
2. First stage nymph
3. Second stage nymph
4. Third stage nymph
5. Fourth stage nymph
6. Fifth stage nymph
7. Adult



Excellent Broad Spectrum Control for All Life Stages

Extensive trials and commercial experience have shown **Tenopa® SC** gives excellent control of a broad spectrum of flying and crawling insects – including ants, bed bugs, beetles, cockroaches, flies, fleas, moths, silverfish etc.

Being effective against all insect life stages – from egg to larva or nymph and adult – it provides far more complete and consistent control than any insecticide-only spray, minimising the possibility of renewed infestations following treatment.

It is equally suited to use in domestic housing, commercial premises – including food processing plants – and public buildings like hospitals, hotels and restaurants.

Easy, Acceptable and Safe in Use

Tenopa® SC is easy to dilute and apply through any type of spray equipment and can be used with confidence in any environment.

As well as being odourless and non-staining, it has a very low toxicity to humans and other warm-blooded animals. This makes it especially suitable for use in sensitive locations close to people, pets and foodstuffs.

With professional application, **Tenopa® SC** presents no risk to either humans or pets which can be re-admitted to treated areas as soon as spray surfaces are dry to the touch.

Good biodegradability adds to its superior overall environmental profile. And any residues can be removed from treated surfaces wherever necessary with warm water and normal household cleaners.

Rapid Knockdown and Extended Residual Action

Tenopa® SC combines speed of action with unparalleled residuality.

Adult insects are sensitised within the first few minutes of contact, with the neural toxicity of the alpha-cypermethrin rapidly leading to over-activity, fatigue, paralysis and death. Knockdown is achieved in as little as 30 minutes and dead individuals are likely within 24 hours.

While not controlling adults directly, the flufenoxuron's high activity against all nymph and larval stages as well as the eggs of any initial adult survivors ensures overall population control increases steadily over a prolonged period.

This and the specialist suspension concentrate formulation which gives even surface coverage and excellent adherence to porous and other difficult surfaces like mortar, brick and cement without significant active ingredient absorption allows **Tenopa® SC** to remain reliably active for up to six months.

Performance on Cockroaches

Cockroaches are ubiquitous and live in close contact with humans. They are found everywhere - in homes, restaurants, hospitals and industrial sites – especially in areas concerned with food handling, preparation and storage.

Cockroaches pose a threat to public health because they carry disease-causing microorganisms responsible for diarrhea, food poisoning and dysentery.

They usually feed on decaying matter and waste where they pick up bacteria and fungi. Because they also feed on human food and, they are capable of transmitting these bacteria and fungi to food supplies. Allergens produced by cockroaches can present serious health threat to people prone to allergies. In addition these cockroaches are a nuisance because they emit an odor that permeates areas where they breed.

Extensive laboratory tests confirm that flufenoxuron is highly active at all nymphal stages and causes a severe reduction in the viability of eggs produced by adult females exposed to the treatment.

Effective Use for the Greatest Value

Tenopa® SC contains 30g/l each of alpha-cypermethrin and flufenoxuron as a water-based suspension concentrate.

It is diluted with water at the rate of 5ml/litre for application through all standard knapsack or hand-held sprayers at low pressure.

Sprayers should be filled with the required amount of water and the measured dose of **Tenopa®** SC added before being shaken thoroughly to ensure even mixing. Thorough shaking is also recommended after any prolonged breaks from work.

Spraying should achieve a uniform coverage of the target area without excessive wetting or liquid run-off.

In normal use of 25 ml of **Tenopa®** SC in 5 litres of water is sufficient to treat around 100m² of surface, each litre of product treating approximately 400m².

A double dose is recommended for heavy infestations or for soiled or highly absorbent/porous surface to ensure sufficient coverage for optimum activity.

Pests	Dilution Rate	Application Rate
Ants, Bedbugs, Cockroaches, Flies, Adult Flies and Mosquitoes	25 ml in 5 litres of water for routine preventive treatment.	Spray 50 ml of chemical solution per m ² . (1.5 mg a.i./m ²)
Ants, Bedbugs, Cockroaches, Flies, Adult Flies and Mosquitoes	50 ml in 5 litres of water for heavy infestation and highly porous or soiled surfaces.	Spray 50 ml of chemical solution per m ² . (3 mg a.i./m ²)



This brochure is intended as advice.

The recommendations for use provided with each product should be carefully observed.

Tenopa® SC is a registered trademark of BASF.
Always read the label and production information before use.

Distributed by:



AGRO TECHNIC PTE. LTD.

2 Ang Mo Kio Industrial Park 2
Sing Industrial Complex #01-01
Singapore 569510
Tel: + 65 64821828
www.agrofog.com

Further information from:

BASF (Malaysia) Sdn. Bhd. (182671-M)
2, Jalan U8/87, Seksyen U8, BukitJelutong,
40706 Shah Alam, Selangor Darul Ehsan, Malaysia
Tel: + 603-5628 3888 Fax: + 603-5628 377

 **BASF**
The Chemical Company