

Taking control of flies to a new level.

Q-Bayt WG10 has been formulated to attract and kill flies, making it the ideal solution in managing flies.

Direction for use:

TREATMENT SITES	PESTS	REMARKS
Livestock rearing facilities (poultry, swine, cattle and horses), housing and industrial areas, hotels, restaurants and landfill.	Flies (<i>Musca domestica</i> , <i>Fannia canicularis</i> , <i>Chrysomia megacephala</i> , <i>Lucilia cuprina</i>)	Dissolve 250 g of product in 2 L of water per 100 m ² floor area. It is recommended that monitoring be conducted at 3, 7, 14 and 28 th day post-treatment.

Make sure you use Q-Bayt WG10:

- Perifocal spray at targeted infestation area
- Less time and less active ingredient
- Sprayed zones have residual that continue to attract flies
- Additives are added to attract flies
- Indoor and outdoor use, and on any type of surfaces



Bayer Co. (Malaysia) Sdn Bhd (7563 M)
Unit T1-14, Tower 1, Jaya 33, No. 3, Jalan Semangat,
Seksyen 13, 46200 Petaling Jaya, Selangor, Malaysia.
Tel: 03-6209 3088 Fax: 03-7960 5717
Email: es.malaysia@bayer.com

READ THE LABEL BEFORE USE

JIRP. P/1015/528

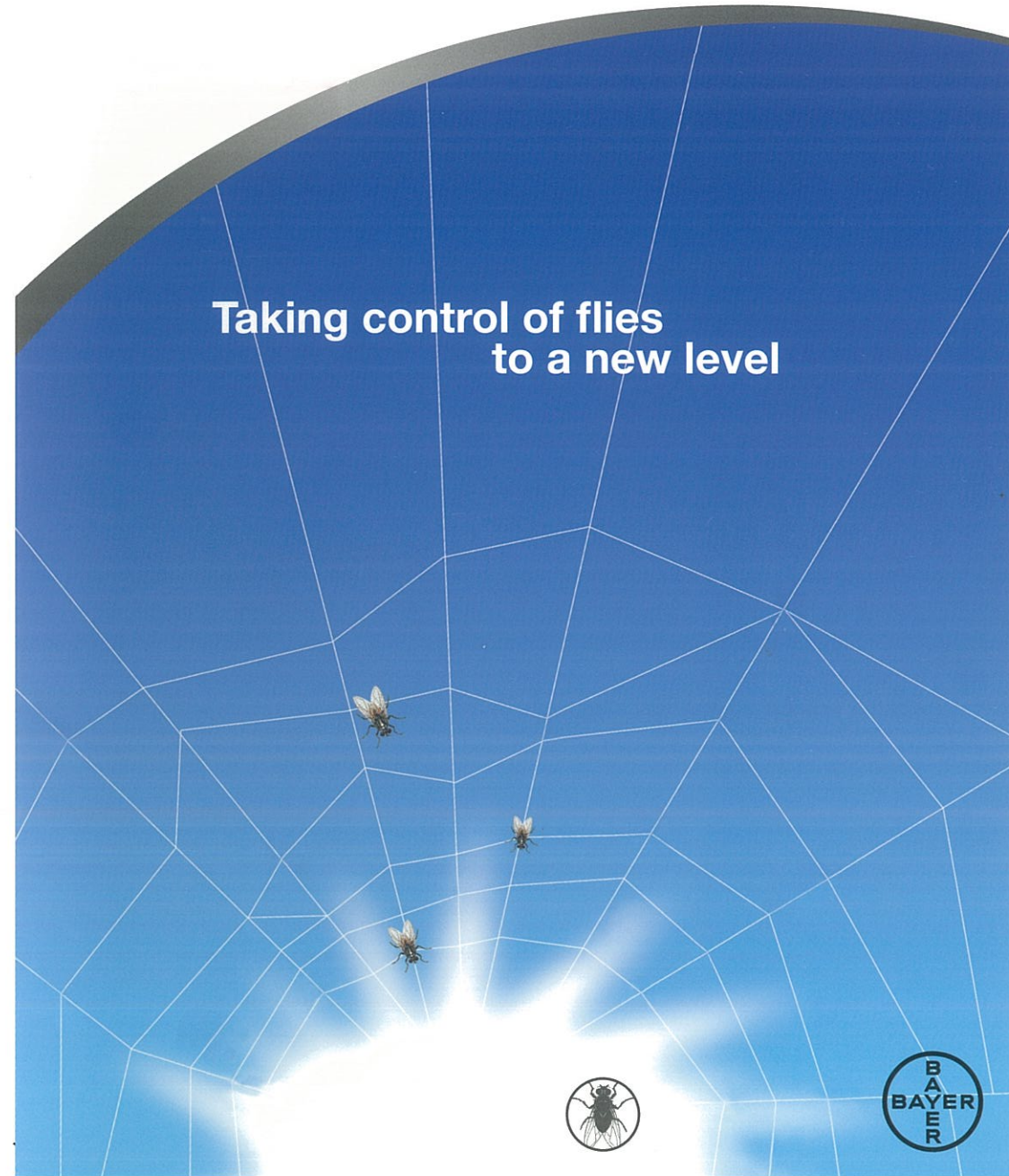
For more information please contact:



Q-Bayt[®] WG10

THIS IS A PESTICIDE ADVERTISEMENT

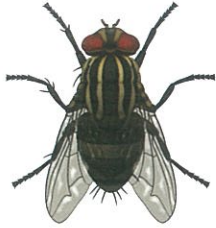
TO BE HANDLED BY TRAINED
PERSONNEL ONLY.





Q-Bayt[®]
WG10

Flies



The term 'fly' when used in relation to pests covers a range of different species. The most widespread pest is the common housefly (*Musca domestica*) which is the main species found in domestic dwellings, commercial situations and is also commonly associated with animal production.

Flies can be vectors of disease (through contamination of food material), they can affect livestock productivity (eg. poultry or pig farms), some species bite (eg. stable flies and March flies) and in some areas of the world flies can be vectors of worm diseases.



In professional pest control, the control of flies is primarily carried out for their nuisance status in domestic situations or in food production environments due to their potential to contaminate food stuffs.

Fly control must therefore be considered part of an integrated approach which incorporates good sanitation, appropriate management of fly breeding sites integrated with the management of adults through the appropriate use of adulticides in a fly control program.

Q-Bayt WG10, the effective solution in stopping flies

Thanks to the effective attractants in Q-Bayt WG10, you can transform practically any area in your operation into a fly-free zone.

No need to treat the entire area, Q-Bayt WG10 reduces the amount of chemical and time to apply

Q-Bayt WG10 uses patented attractant technology that attracts flies to land and feed on the sprayed area.

This technology means that Q-Bayt WG10 does not need to be applied to the whole wall or surface. Q-Bayt WG10 can be applied to approximately one third of the wall and as a spot treatment only, reducing the amount of product applied and the risk of contamination, whilst also saving time.



Q-Bayt WG10 is an example of the innovation technology developed by Bayer to solve your problems in a sustainable way.

Science For A Better Life



Q-Bayt[®]
WG10

Q-Bayt WG10 offers long lasting fly control, with good residual visual activity for up to 4-6 weeks. Its unique patented formulation gives knockdown results, killing certain fly species in less than 60 seconds.

Knockdown - less than 60 seconds

Q-Bayt WG10 is a water dispersible granule which can be mixed with water and sprayed onto surfaces where it attracts and kills certain species of pest flies - fast! The results are seen within **60 seconds!**

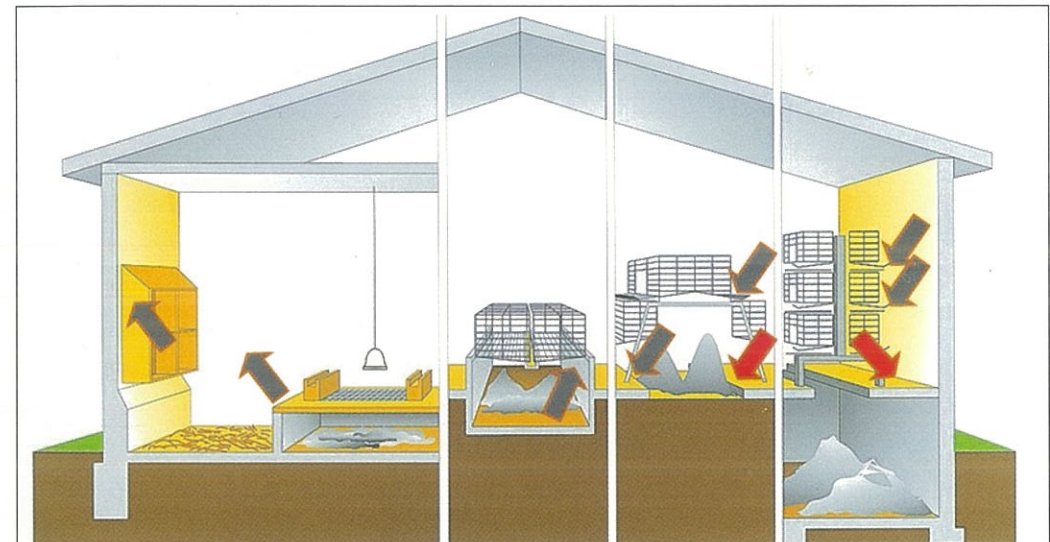
Indoor and outdoor use, and on any type of surface

Q-Bayt WG10 offers flexible application methods, as it can be used as a **application** or as a **spray application** to surfaces where flies aggregate.

It can be applied to a range of different surfaces (garbage, bins and other refuse areas, walls) both **indoors and outdoors**.

An ideal product to use in the following areas:

- Inside commercial establishments
- Around the outside of residences and commercial buildings
- In and around agricultural livestock production facilities



Examples of where Q-Bayt WG10 can be applied on farms